

# **Yorkshire Funders Presentation**

---

**Social Enterprise  
Reducing Dependency  
Worthy of grant & Social Investment?**

# Presented by

Andrew Croft:

- SEUK Board Member & Director Special Projects
- Former Chair Foyer Federation
- Former Chief Executive the Helen Taylor Thompson Foundation (Canopy)
  
- Prior to joining the social sector in 2006, Andrew was employed as VP Business Development easyGroup (easyjet LSE, Stelmar Tankers NYSE)
- Andrew holds an MBA from Imperial College

# Social Enterprise UK

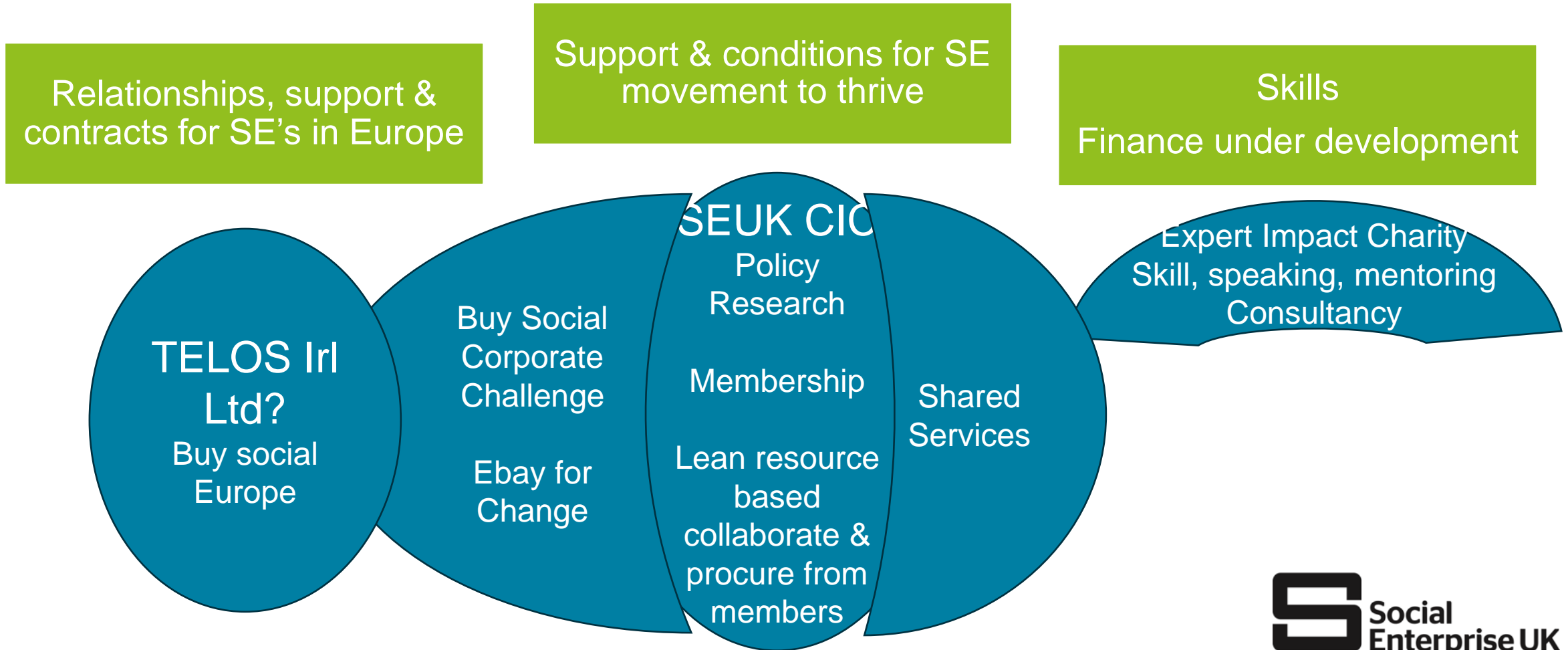
## **Social Enterprise Coalition CIC**

- Founded in 2002
- Founding Chair  
Baroness Thornton
- Subsequent Chair  
Claire Dove (current Crown  
Representative VCSE)
- Current Chair  
Lord Adebowale

## **DBA SEUK**

- CEO Peter Holbrook CBE
- Community Interest Company
- Ltd by Guarantee
- Asset locked
- Non Profit Distributing

# SEUK Group – Addressing Sector Barriers



# What is a Social Enterprise

**SE's are a broad church & can be:**

- Trading Charity
- Industrial & Provident Society
- Co. Ltd by Guarantee (CLG)
- CIC by Guarantee
- CIC by Shares (some distribution of profit with caps and collars)
- CLS distribution as per mem & arts

**Trading- Services & products, retail, or support. B2B, B2C & both.**



# Social Enterprise legal status comparison UK vs Yorkshire & Humber

## UK

- CLG (inc CIC CLG) 47%
- CLS (inc CIC CLS) 24%
- CIC 39%
- IPS 10%
- Other 12%

## Yorkshire & Humber

- CLG (inc CIC CLG) 49%
- CLS (inc CIC CLS) 23%
- CIC 39%
- IPS 12%
- Other 15%

From SEUK state of social enterprise survey 2021

# Social Enterprise top 5 trading activity UK vs Yorkshire & Humber

## UK

- Healthcare 10%
- Education & Skills Dev 15%
- Social Care 5%
- Creative Industries 9%
- Biz Support Consulting 7%

## Yorkshire & Humber

- Healthcare 17%
- Education & Skills Dev 15%
- Social Care 9%
- Creative Industries 9%
- Biz Support Consulting 8%

# Why SE & not Charity now?

- There are just under 170K Charities registered.
- This amount has remained relatively constant over at least a decade
- “Trinity House” one early Charity was established by Henry V111 in 1514
  
- CIC’s were created just 16 years ago and surpassed 26K in 2022
- The SOSE report estimated in excess of 100K SE’s in the UK in 2021
- The first IPS Co-Op was 1844 Toad Lane Rochdale.
- Given funding is harder why are SE’s a preferred social model likely to outstrip Charity over a similar period?



# Why are those interested in solving societies problems looking to social enterprise?

## Charity

- Can create a dependency
- No Board position for CEO
- Can be difficult to update
- Seen as older by youth
- Subject to funding fashion

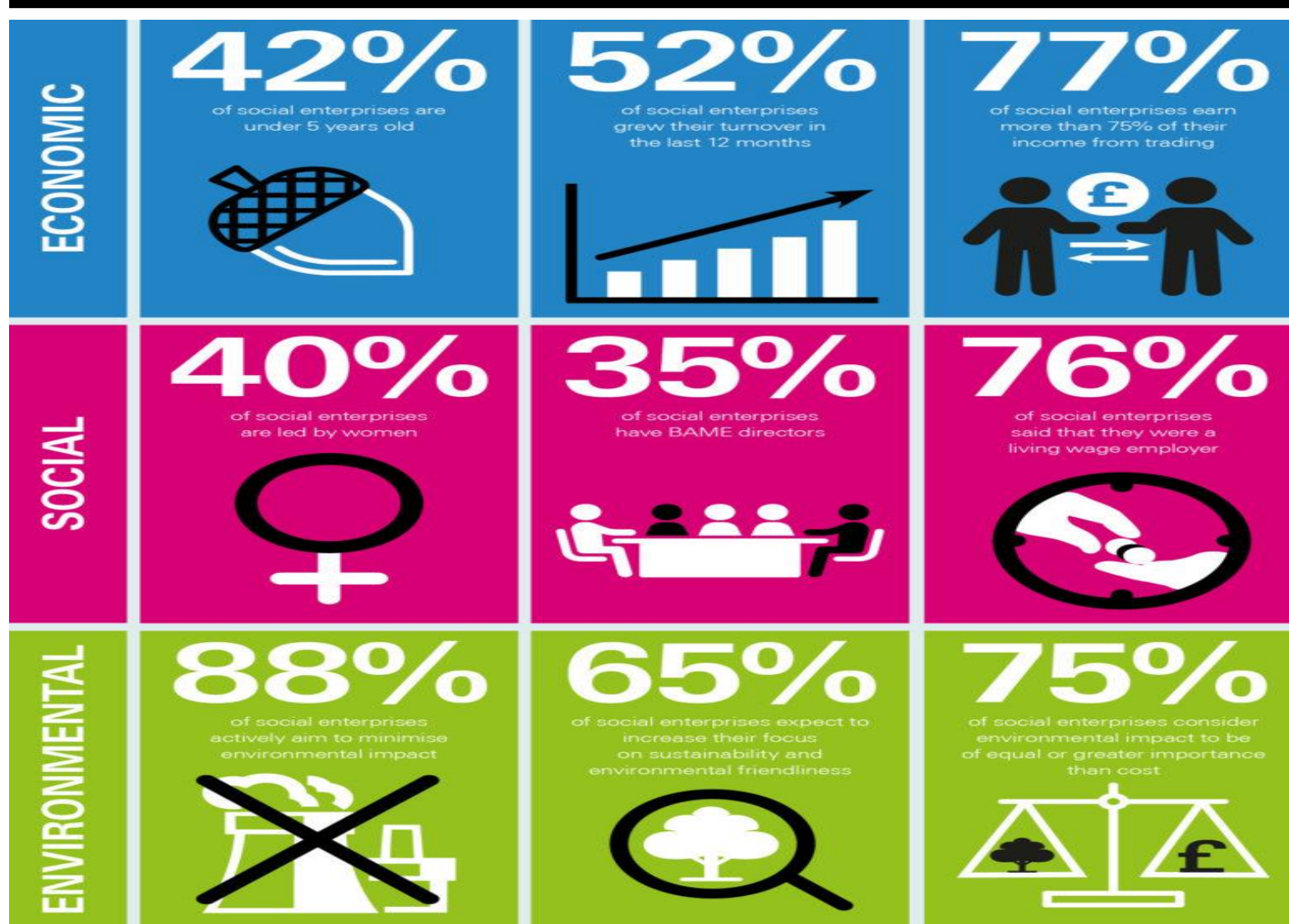
## Social Enterprise

- Assisted sustainability
- CEO sits on Board as equal
- Management vision can adapt
- Appeals to soc entrepreneurs
- Uses a social business model

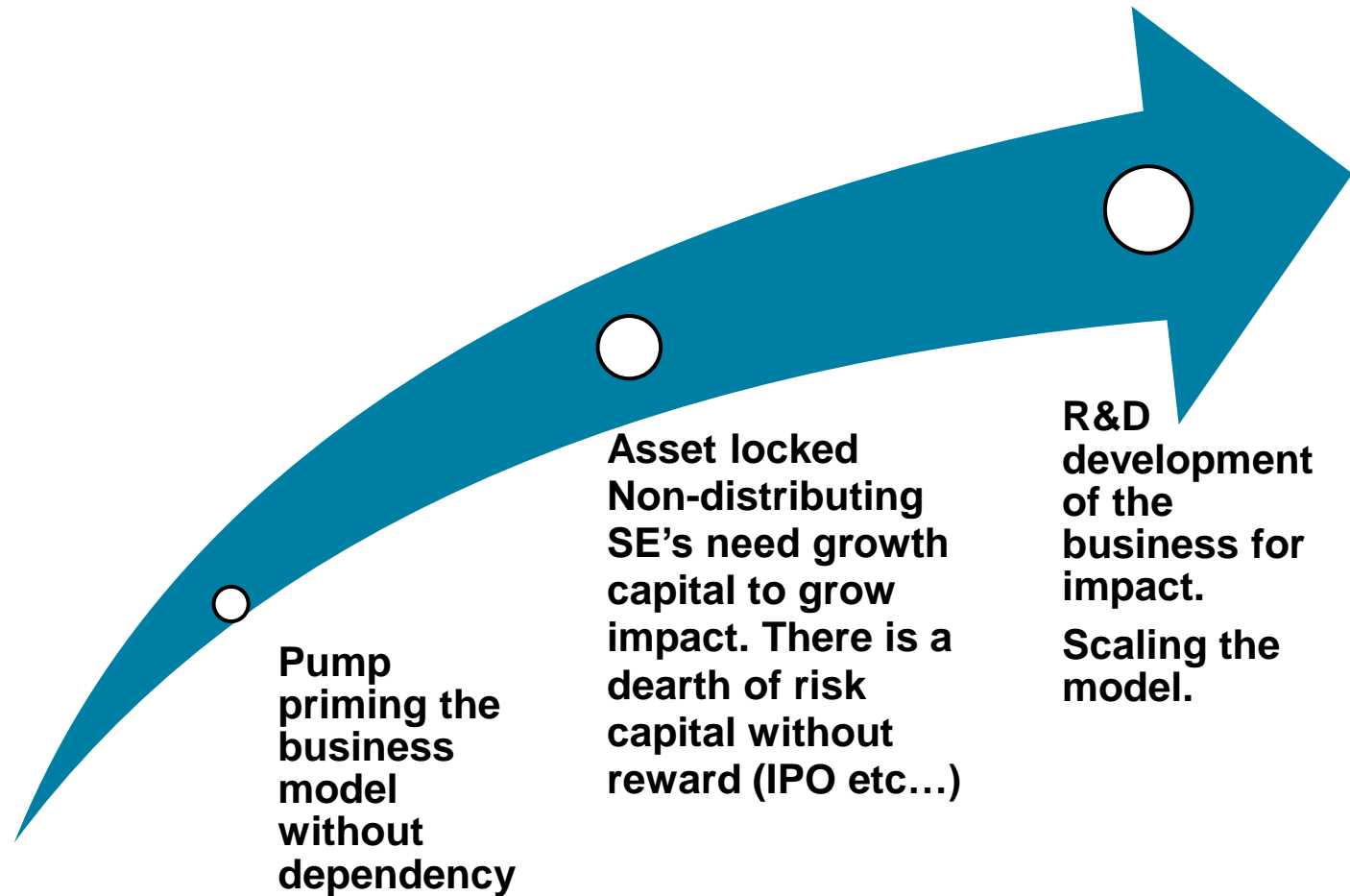
# Scale of Social Enterprise



# Reflective of Society



# Why do SE's need grants and investment?



# Why make grants to Social Enterprise?

## Why

- Eliminate dependency
- Profit returned to do more
- Most SE's asset locked
- Most SE's re-invest all profit
- Profit distributing SE's can raise risk capital and can take endowment investment

## Outcome

- Business not dependency
- Multiplying initial grant
- If biz closes assets transfer
- Fund up to CIC by guarantee
- Potential endowment return to make grants while increasing impact

# State of Social Enterprise 2021 Highlight on Yorkshire & Humber

## Link to download

[State of Social Enterprise 2021:  
Yorkshire and the Humber | Social  
Enterprise UK](#)

